

Get Mobile!



Omni Mobile

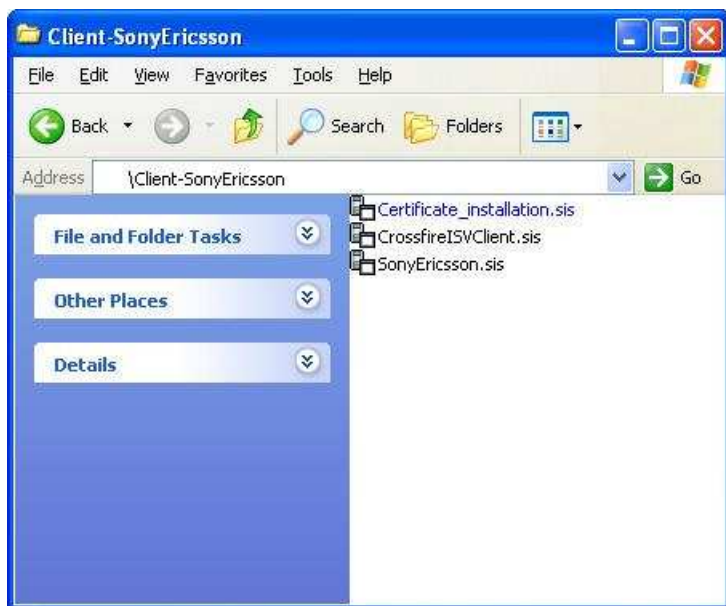
Client Installation Quick Start Guide for Sony Ericsson P800, P900, and P910 Devices

Getting Started

This Quick Start Guide is for Sony Ericsson P800, P900 and P910 smart phones. There are separate Quick Start Guides for Pocket PC, Windows Mobile, Palm and Nokia devices. Your device must have a minimum of 3 MB of main memory or storage card space to hold the Omni Mobile client. We recommend an additional 5 MB of main memory space or storage card space to hold email, calendar and contact data. This Guide is for Omni Mobile 2.3 or higher. Omni Mobile support SSL certificates on Sony Ericsson devices without any additional configuration of the device.

Install the Omni Mobile Client

There are two ways to install the Omni Mobile client and provision your account. The **Desktop-based** installation option is used if you can cradle your device to your workstation or have Bluetooth connectivity. This option is recommended for provisioning accounts with large address books or large numbers of calendar entries. Desktop-based uses your workstation to copy the client installation files to your device. **Browser-based** installation is normally used if you cannot cradle your device. Use the Internet browser on your device to copy and install the client files to your device. Installing the client takes two minutes.



Option 1 - Desktop-based Installation

1. Extract the **omnimobile.zip** file to your computer.
2. Cradle your device and ensure that you are connected using the Sony Ericsson Sync Manager or use a Bluetooth connection if your device and computer support it.
3. Using a file explorer on your computer, find and double-click the **CrossfirePremierClient.sis** and choose to install it on your device.

IMPORTANT

CrossfirePremierClient.sis can only be installed into the device's main memory. The Omni Mobile client (**SonyEricsson.sis**) can be installed to the device internal memory or to a SD or CF expansion card. Choose the location with the most available memory.



4. Using a file explorer on your computer, find and double-click the **SonyEricsson.sis** and choose to install it on your device.

Congratulations, you have installed the Omni Mobile client.

Do not run the Omni Mobile client. The next step is to provision your account. Please refer to Page 2: **Provision Your Omni Mobile Account**



Option 2 - Browser-based Installation

For this option, your device must have Internet access and you must be able to browse to websites using Internet Explorer on your device. Please ask your network administrator for the download **links** for the two required Omni Mobile client installation files.

IMPORTANT

CrossfirePremierClient.sis can only be installed into the device's main memory. The Omni Mobile client (**SonyEricsson.sis**) can be installed to the device internal memory or to a SD or CF expansion card. Choose the location with the most available memory.

1. On your device, open the web browser.
2. Enter the download URL for the **CrossfirePremierClient.sis** file. Select **Open file after download**, and tap **Yes**.
3. Enter the download URL for the **SonyEricsson.sis** file. Select **Open file after download**, and tap **Yes**.

Congratulations, you have installed the Omni Mobile client.

Do not run the Omni Mobile client. The next step is to provision your account. Please refer to: **Provision Your Omni Mobile Account**.

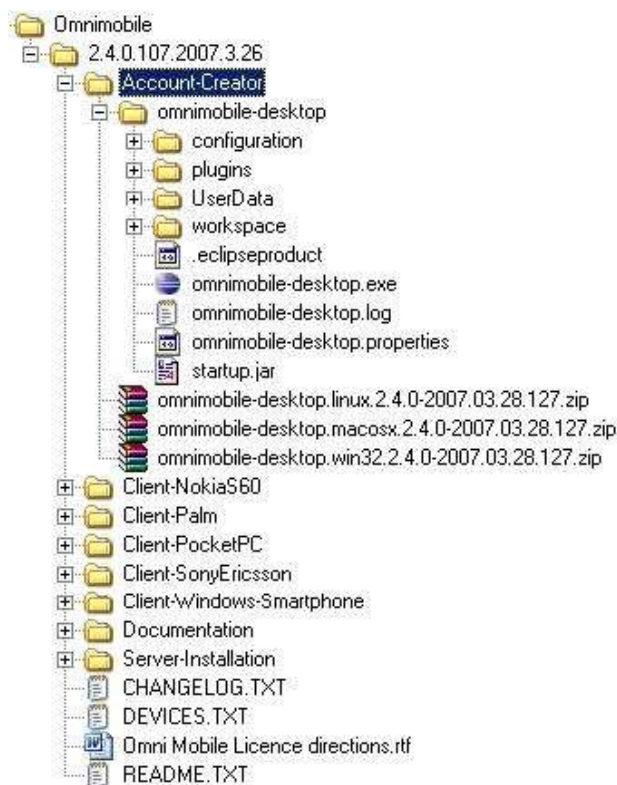
Provision Your Omni Mobile Account

There are two options to provision your Omni Mobile account. **Desktop/cradle-based** is recommended to provision accounts using your high-speed workstation connection. Use this method if you have a large number of emails and calendar entries or large address books you want to configure on your device. **On-Device (cradle or wireless)** is used to copy your policies, folders, email, calendar items and address books directly to your mobile device. Use this option if you have a small amount of data to copy to your device or if you cannot cradle your device.

Option 1 - Desktop-based Account Provisioning

For this option, your computer must have access to the internet and the account creator program **omnimobile-desktop.exe**. You must also have **QFileman** (<http://www.symbian.com/developer/downloads/tools.html>) installed on your device.

1. On your computer, go to **c:\omnimobile\Account-Creator** and extract the appropriate zip file. For Windows, right-click **omnimobile-desktop.win32.2.4.2007.03.28.127.zip** and choose **Extract here**. This will create an **omnimobile-desktop** folder that contains **omnimobile-desktop.exe**.





Option 1 - Desktop-based Account Provisioning (continued)

- Run **omnimobile-desktop.exe** (Windows) or **omnimobile-desktop** (Linux or Mac). Specify the correct URL (http or https) to connect to your GroupWise WebAccess login screen, for example.

```
https://mail.mycompany.com/servlet/webacc
(for GroupWise 6.x)

https://mail.mycompany.com/gw/webacc
for GroupWise 7.x)
```

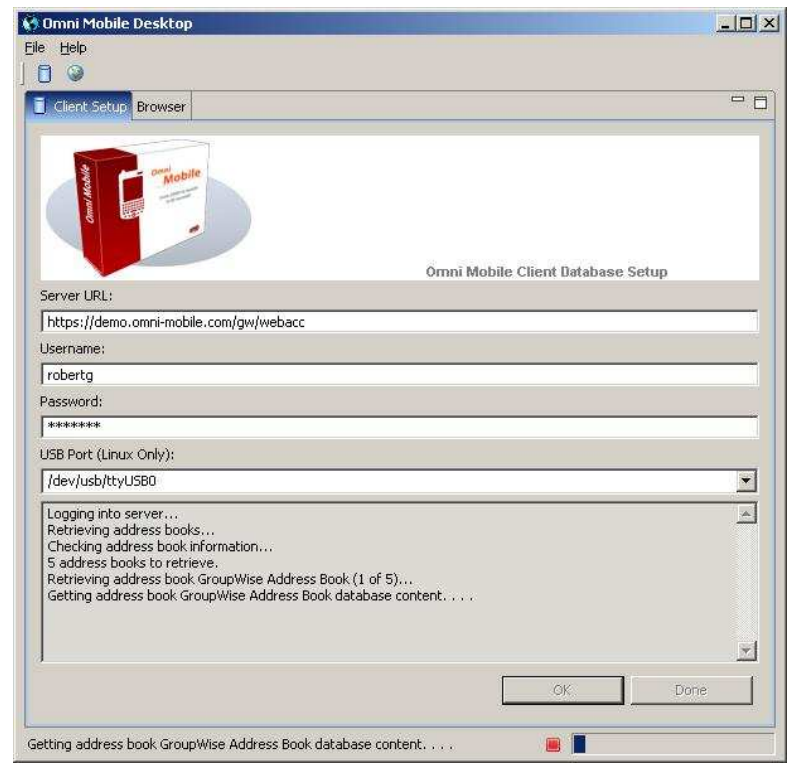
- Provide the user name and password you normally use for GroupWise WebAccess, and click **OK**.

Several minutes may pass while .PDB data files are transferred to your computer into the **UserData** folder in the same directory as the omnimobile-desktop.exe.

- When the data files are finished copying, a message will appear. Click **OK** and **Done**.

- Using Windows Explorer, copy the **UserData** folder from **C:\omnimobile\Account-Creator\omnimobile-desktop** on your computer to the **<Device>\Phone Memory\document** folder on your device.

- On your device, using the **QFileman** move the **UserData** folder from **documents\Media Files\document** to **documents\Media**

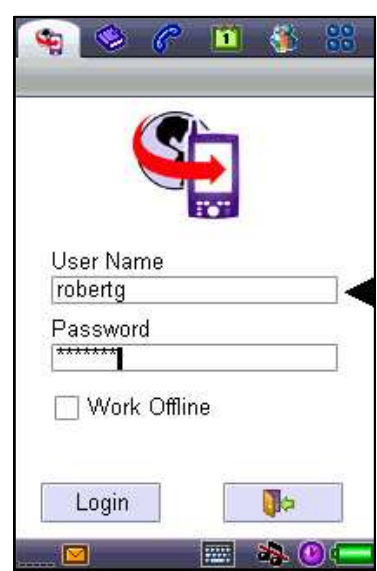


Congratulations

You are now ready to login to Omni Mobile.

You have instant on-line and off-line access to your configured folders, email, appointments, tasks, notes and address books.

Refer to the **Using Omni Mobile Quick Start Guide** for information on how to use the Omni Mobile client.





Option 2 - "On-Device" Account Provisioning

If you start the Omni Mobile client on a device that does not have account "PDB" files provisioned, it will automatically start the "First-run Wizard". For this option, your device must have access to the Internet and you must be able to browse to websites with Internet Explorer on your device.



IMPORTANT

The "First-run Wizard" allows the client software to connect directly to the Omni Mobile server to retrieve the account information based on the User Profile that was configured. Time to complete this process will depend on the amount of mail and calendar entries, the size of address books to copy and the device connection speed. When using On-Device provisioning, we recommend you:

- Remain in a single location. Do not do this while moving about.
- Configure your Omni Mobile **Folder** policies to **Copy** a minimum amount of email for each folder (e.g. 1 or 2 days).
- Configure your Omni Mobile **Address Book** policy to synchronize a small address book with fewer than 100 contacts. You can add large address books when you are cradle connected.

WHAT IS HAPPENING

When the Omni Mobile client first opens, it displays empty folders that match what you configured in your **Folder** policy. After creating the folder structure, Omni Mobile:

1. Creates the address book structure. You may see notifications looping between **Checking for Changes** and **Folder(s): 1 of #** for a few minutes.
2. Copies all contacts to the Address Books. You will see



3. Copies all calendar items to the Calendar folder.
4. Copies all email items to the Mailbox and other folders specified in the **Folder** policy. You will see



1. On your device, run the Omni Mobile client. This initiates the First-run Wizard. Provide the URL to your GroupWise WebAccess server, your GroupWise login username and password, and tap **Start**.
2. After the folder structure is copied to the device, your Omni Mobile client will start but the folders will not contain any email, calendar items or address book contacts.
3. You must wait until all of the data gets copied from the Omni Mobile server to your device before you can use your Omni Mobile client (see the "What is Happening" sidebar).

Congratulations

You are now ready to use Omni Mobile.

You have instant on-line and off-line access to your configured folders, email, appointments, tasks, notes and address books.

Refer to the **Using Omni Mobile Quick Start Guide** for information on how to use the Omni Mobile client.

